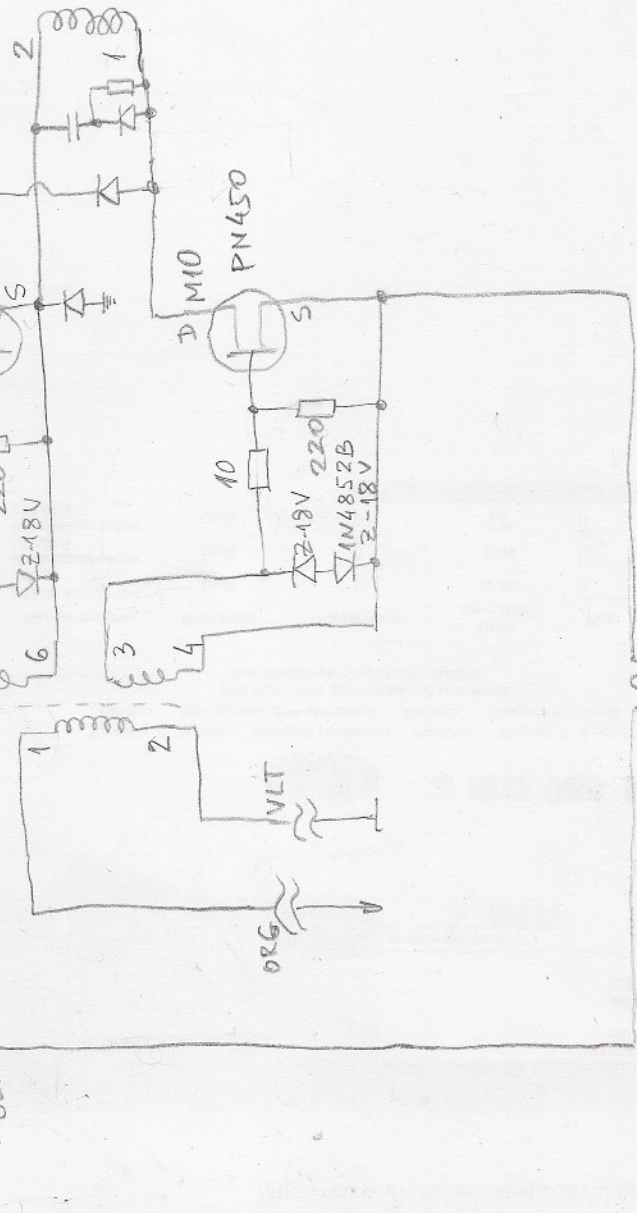
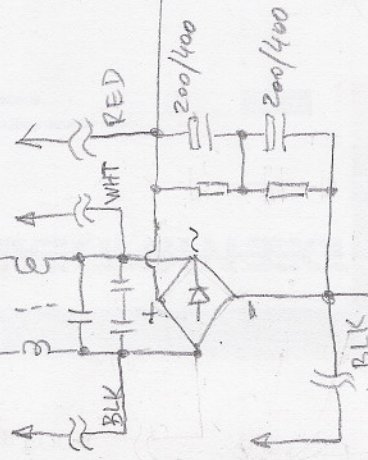
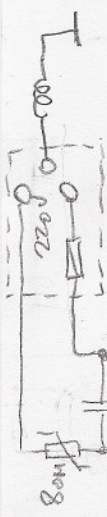
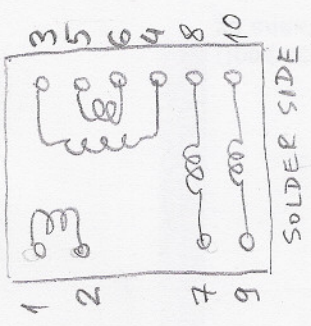
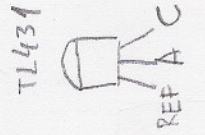
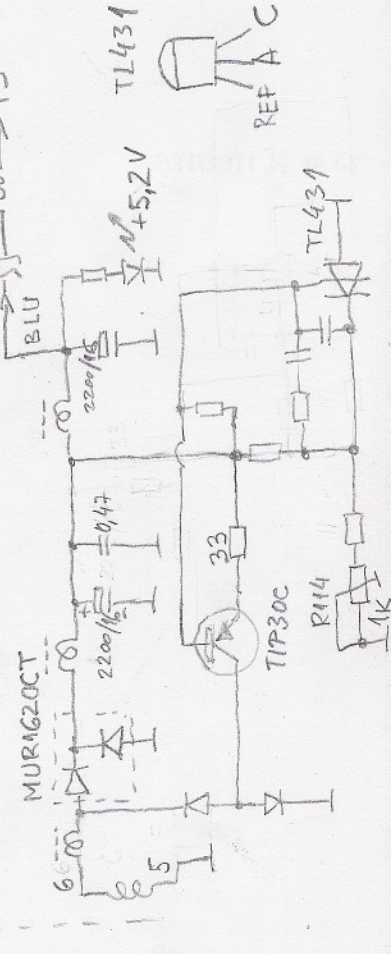
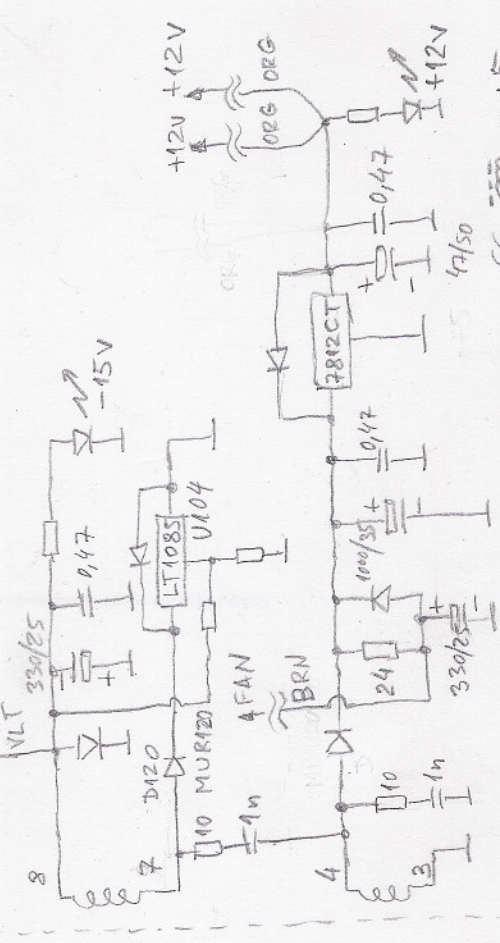
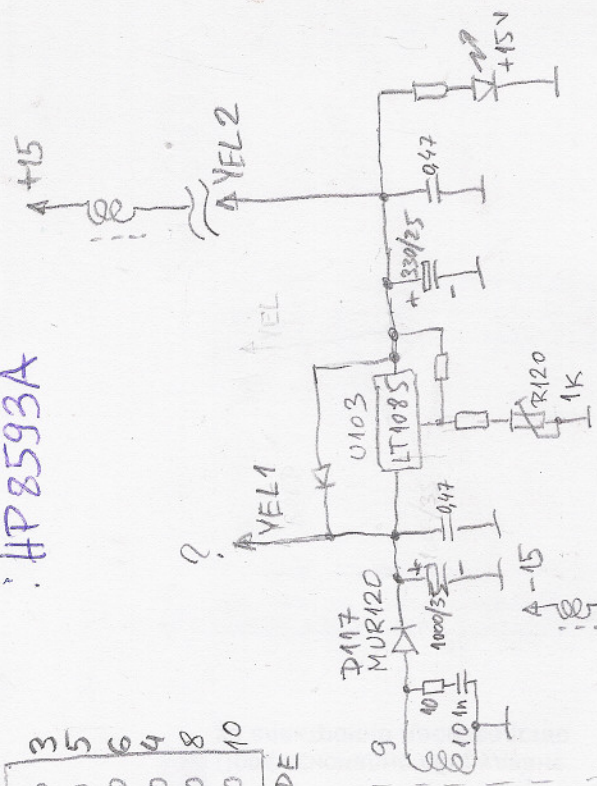


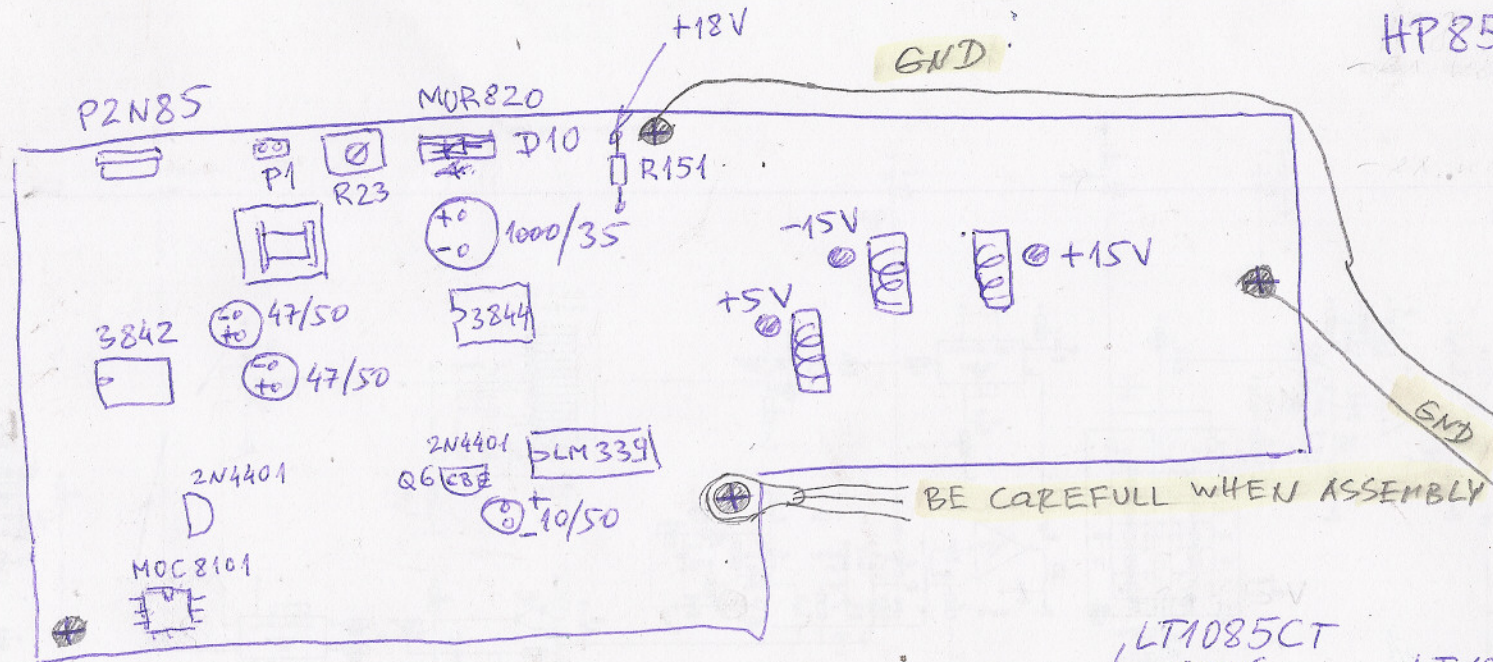
HP 8593A



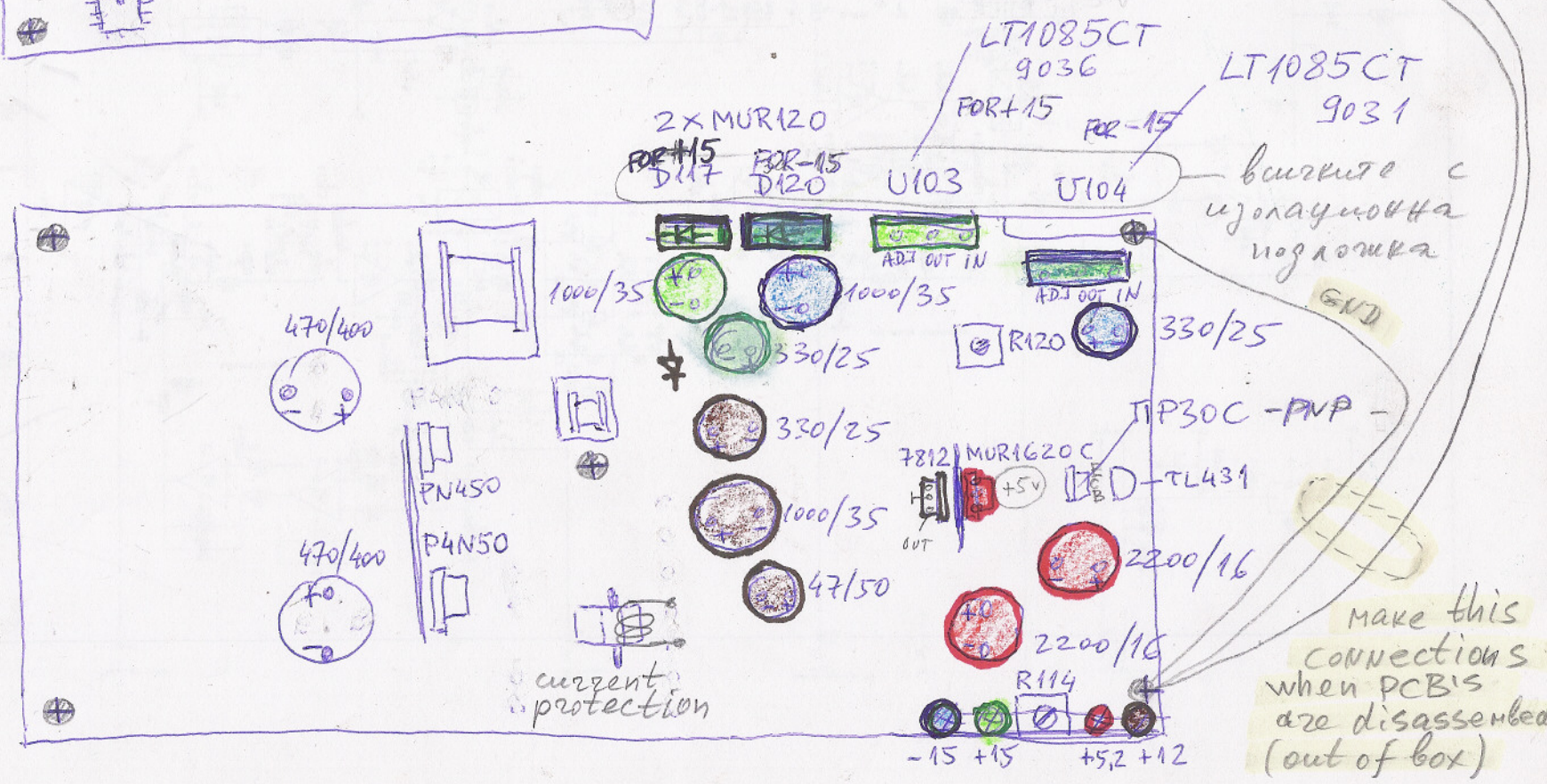
over load protection



HP 8593A



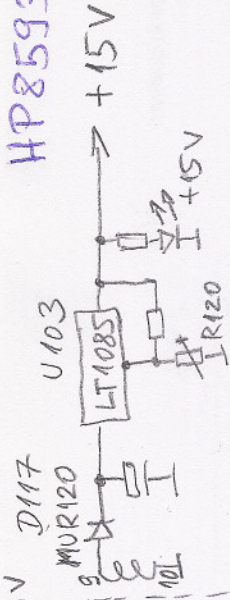
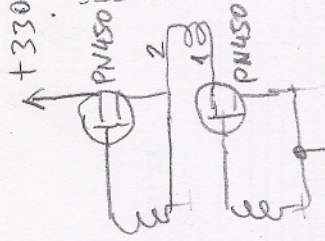
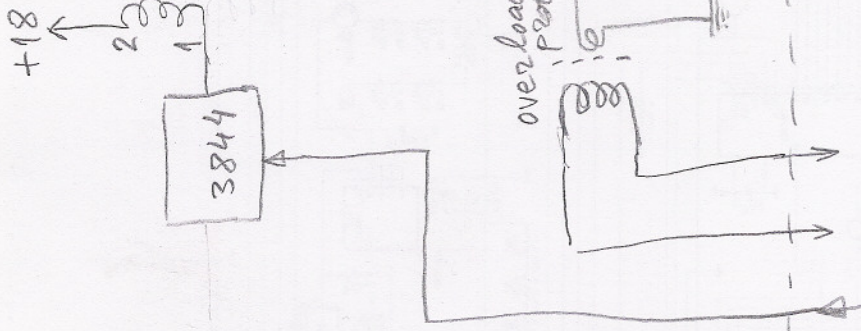
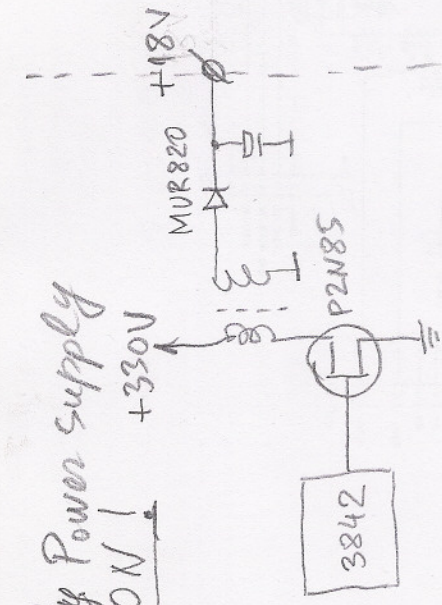
- +5V
- +15V
- -15V
- +12V



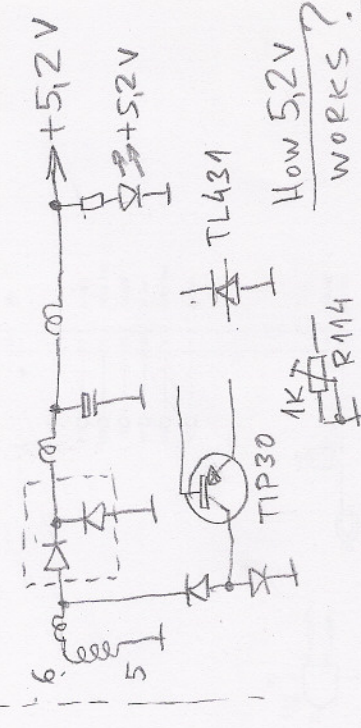
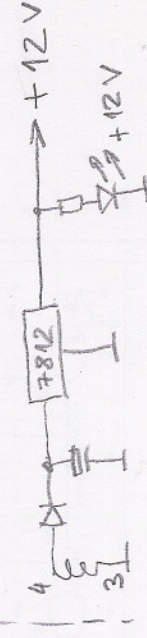
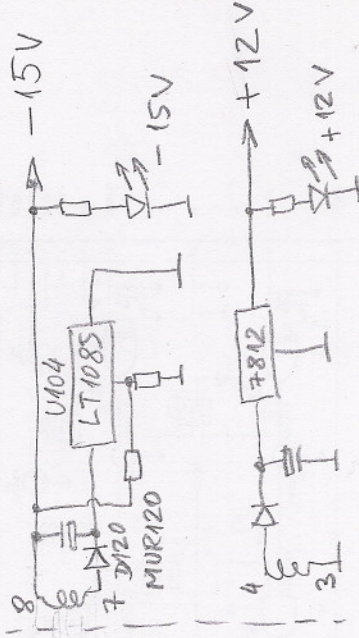
визрите с
ујонауковна
ногаљовка

Make this
connections
when PCBs
are disassembled
(out of box)

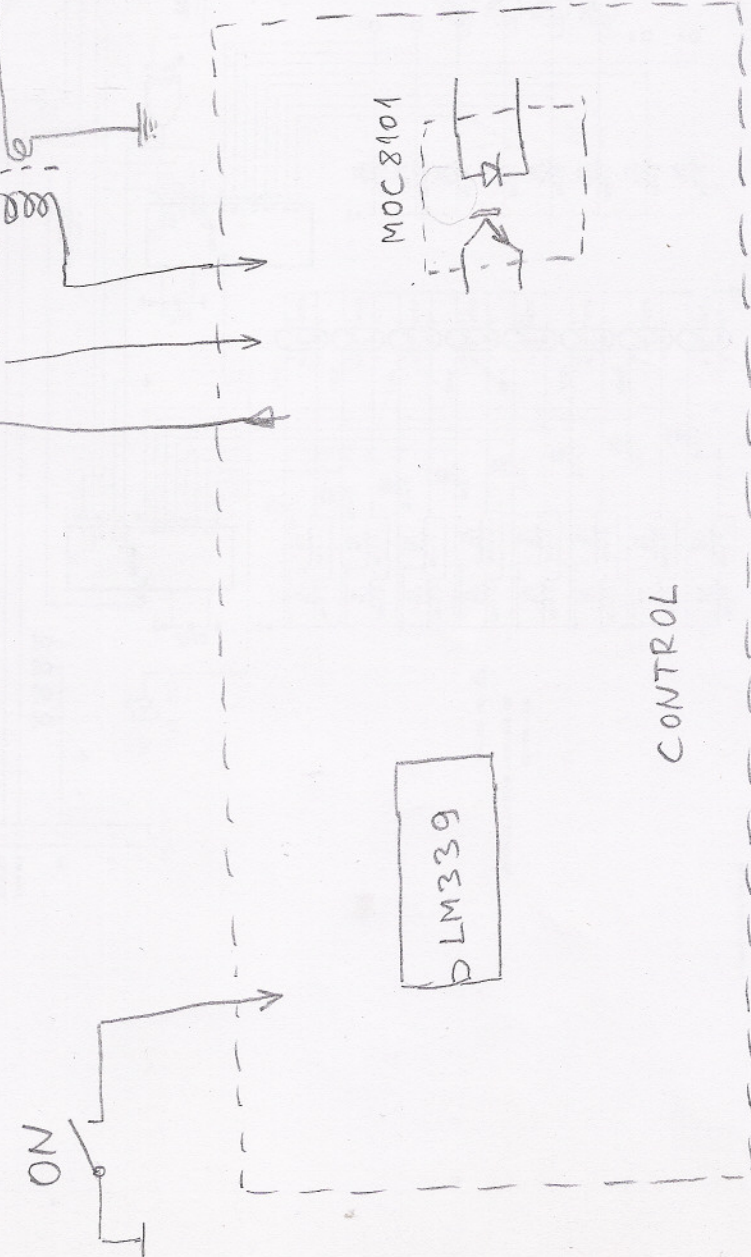
Stby Power supply
always ON!



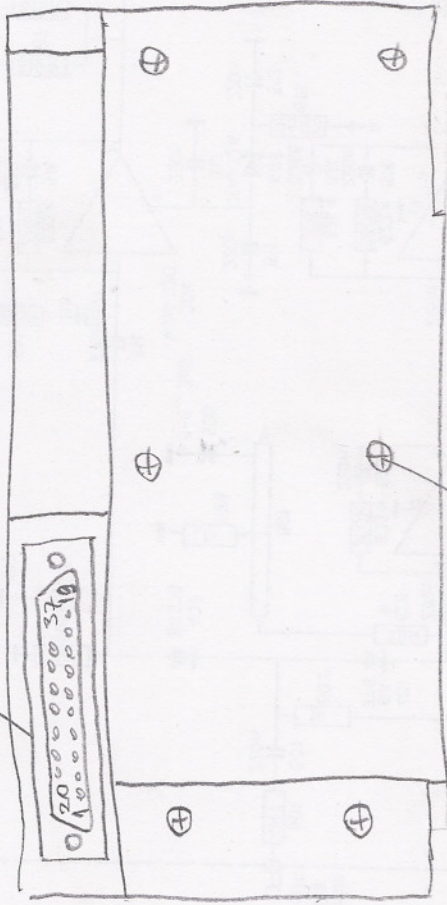
HP8593A



How 5.2V WORKS?



CONNECTOR DB37 is UP



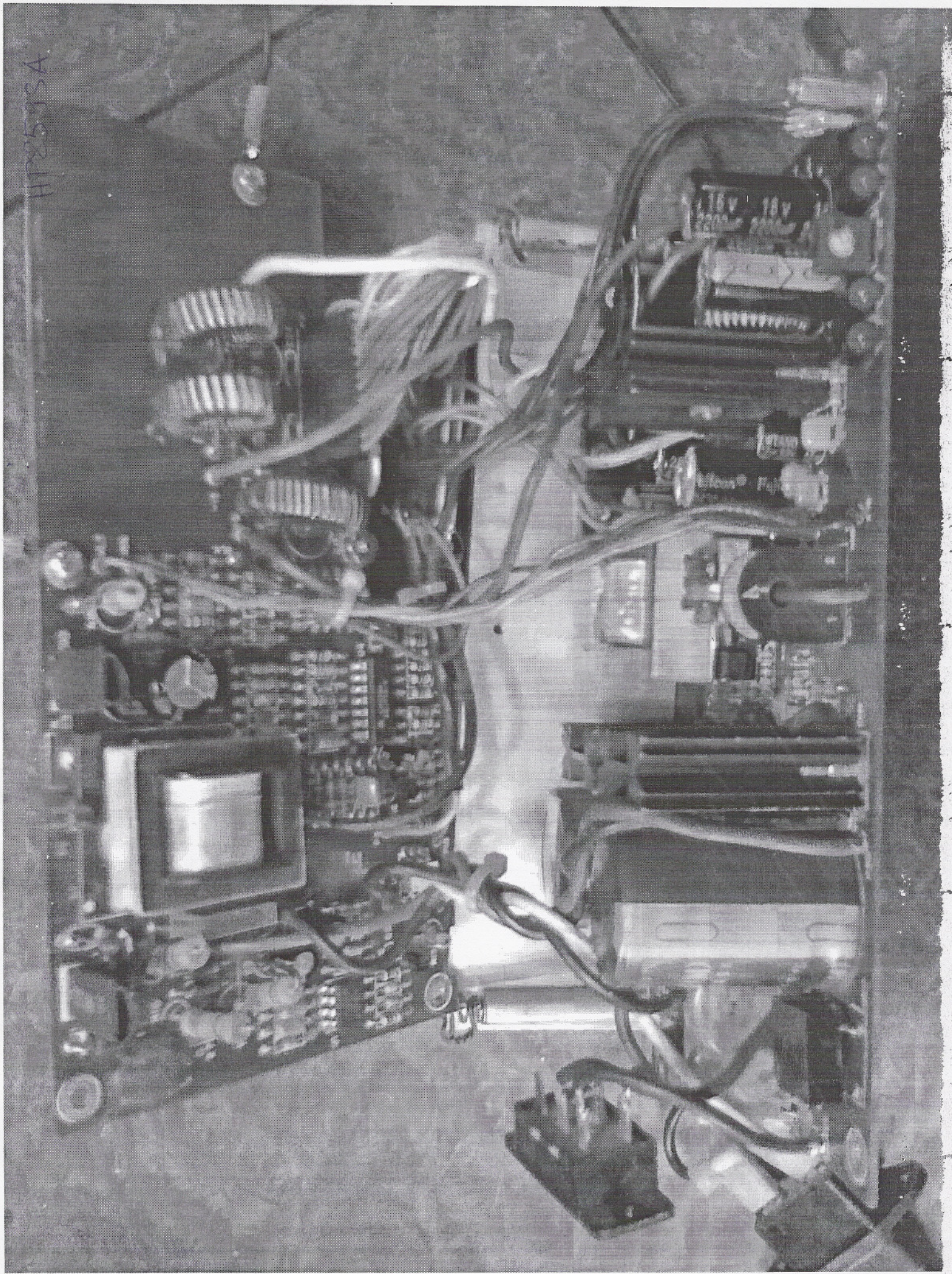
this screw - shorter

- ① Don't know for what are:
- LIVE_TRIG (J13-pin 18)
- HPWRUP (J13-pin 37)

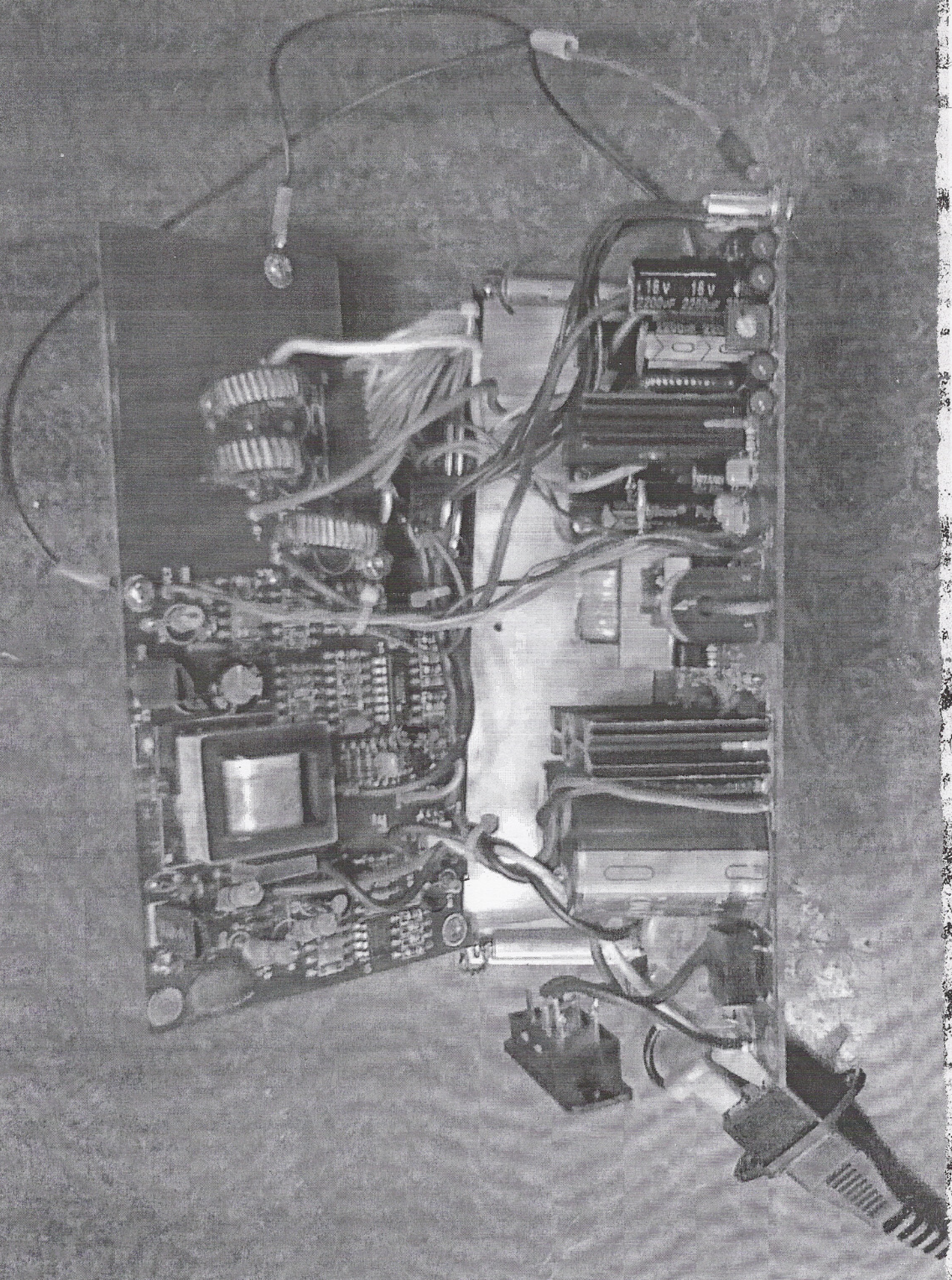
② To have 5,2V correctly,
you need to load +15 or -15
or +12 or all of them with
current min. 50% of nomina.
+5V (4,5A), +15(0,2A), -15(0,2A)
+12 (0,4A), others - above
+5V (4,5A), but +15 or -15
or +12V is 1,

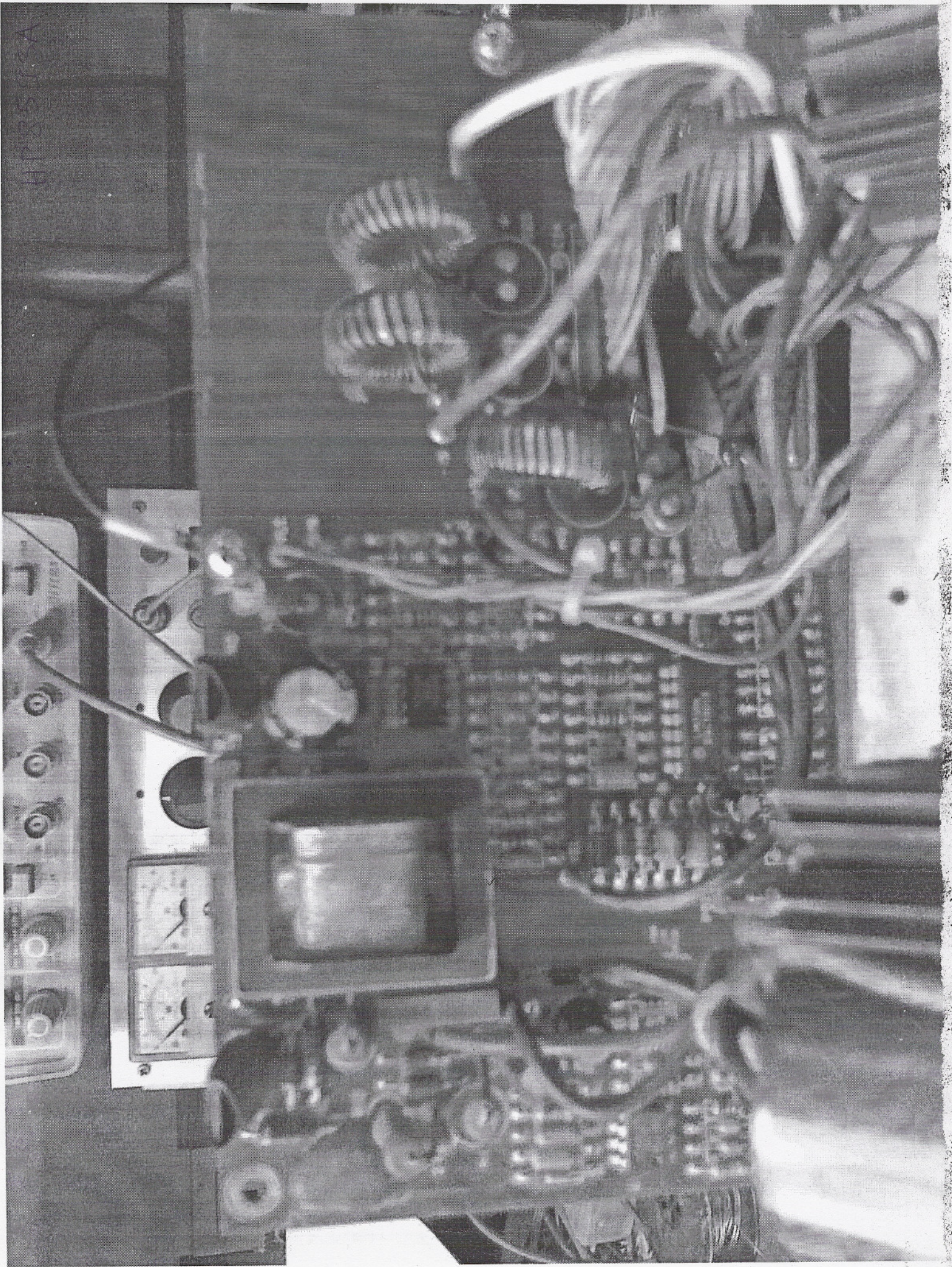
Example: A) +5,2 is 4,0 when load is: +5V (1A),
B) +5,2 is 4,5 when load is: +5V (1A),
C) +5,2 is 5,2 (OK) when load is: +5V (4,5A),

HP8535A



HP8593A





HP 3578A

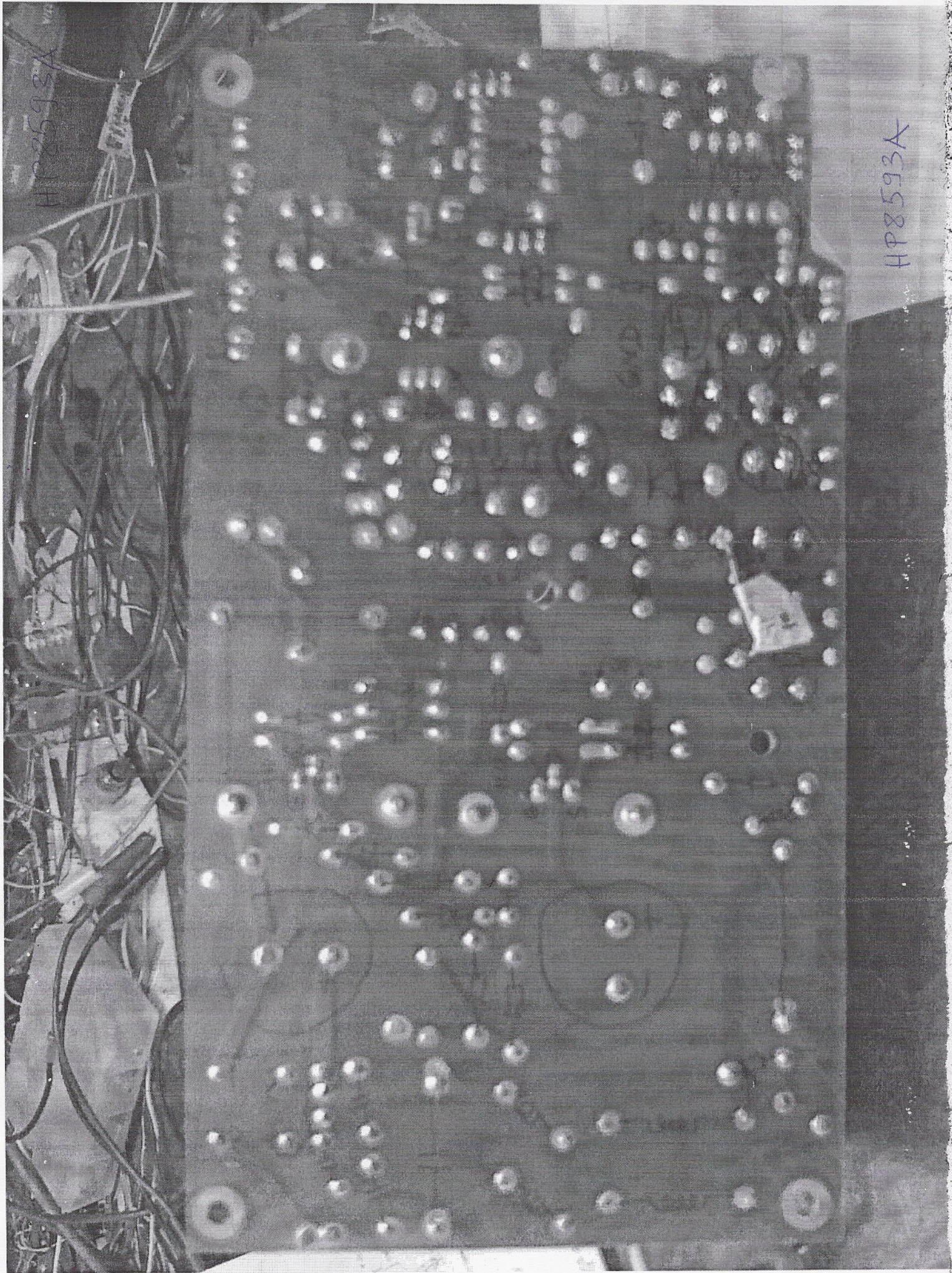
7002



5MS

5V





HP8593A

HP8593A

48 kHz

10 mV

20 V

